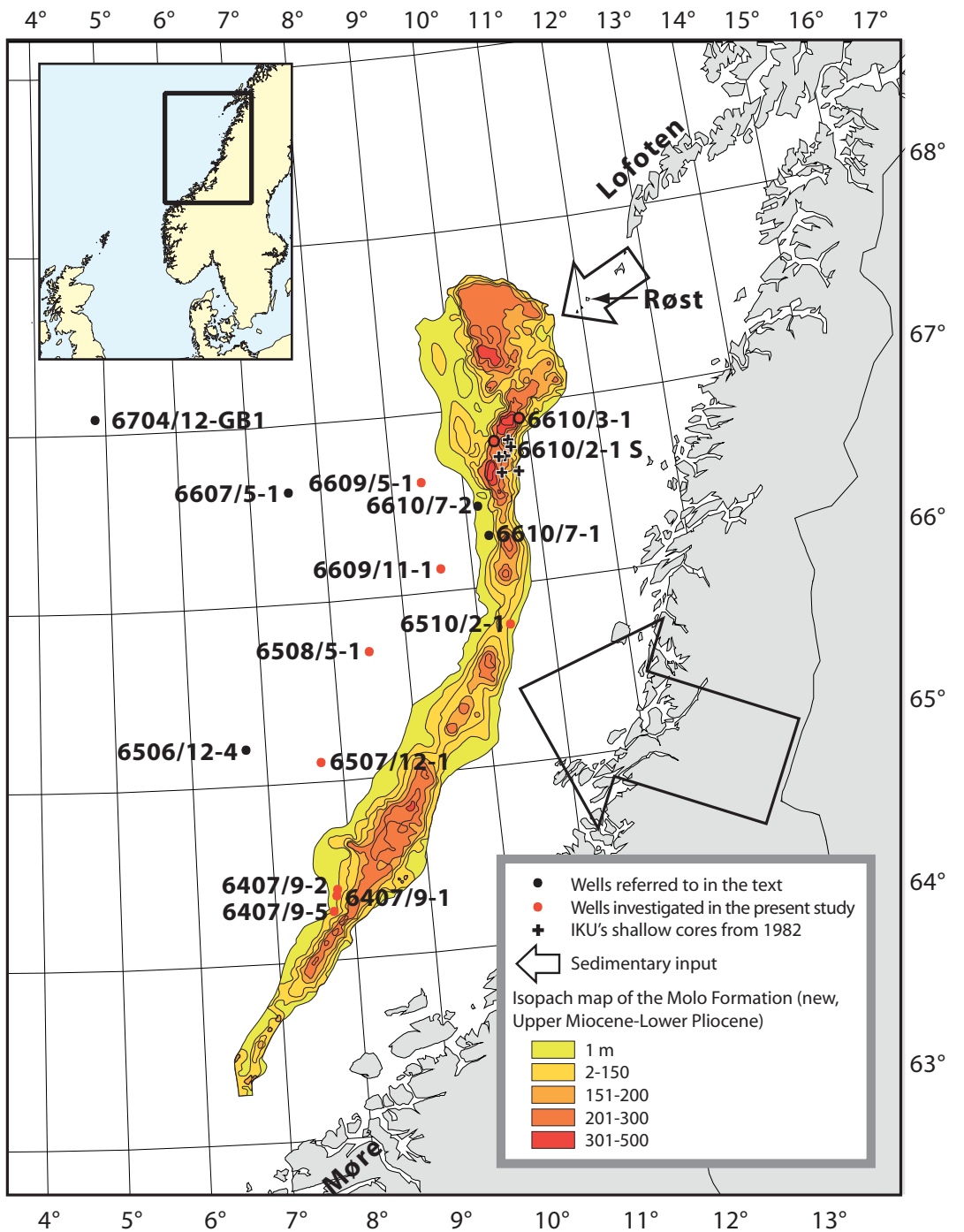


Fig. 1



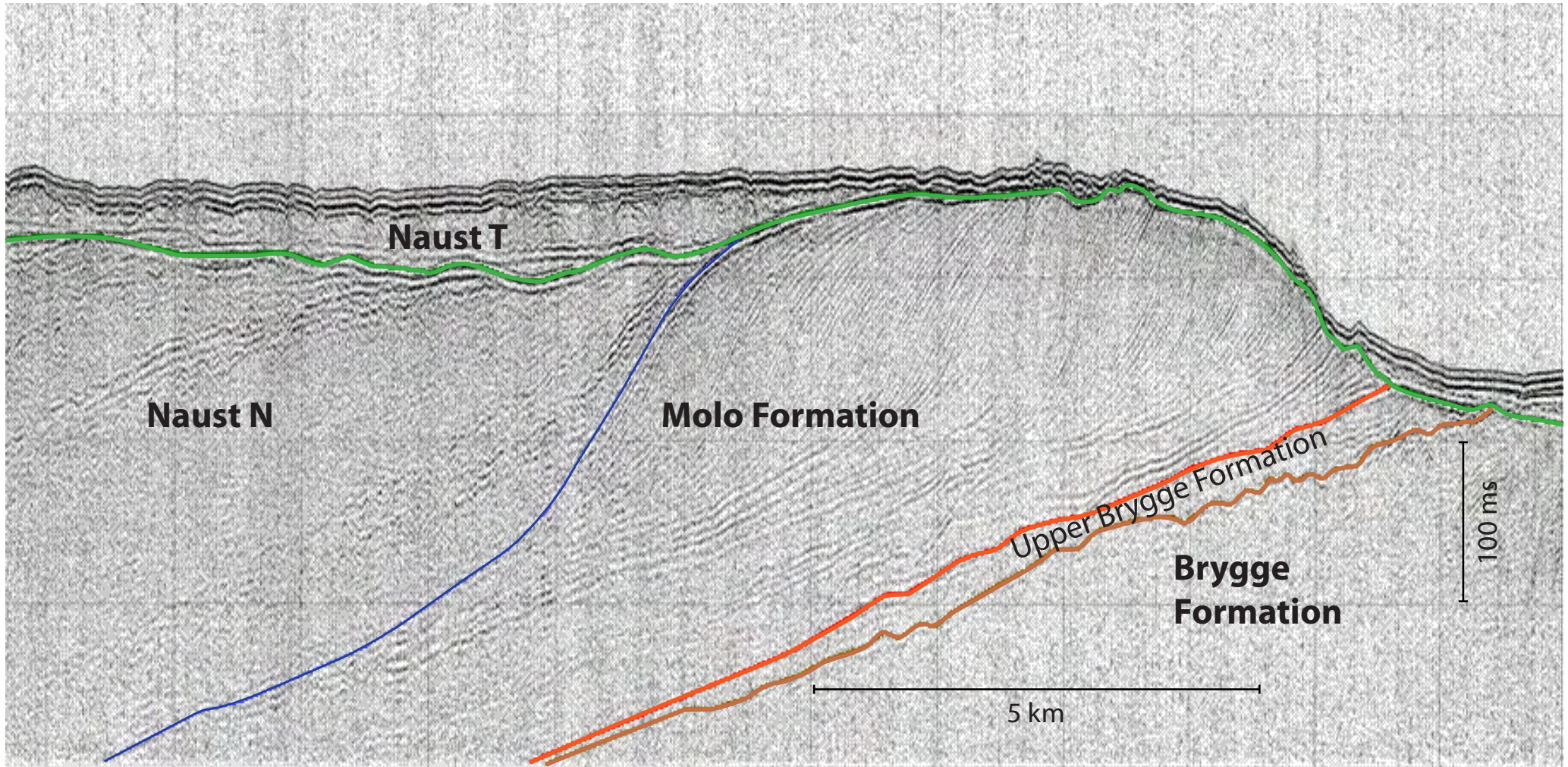
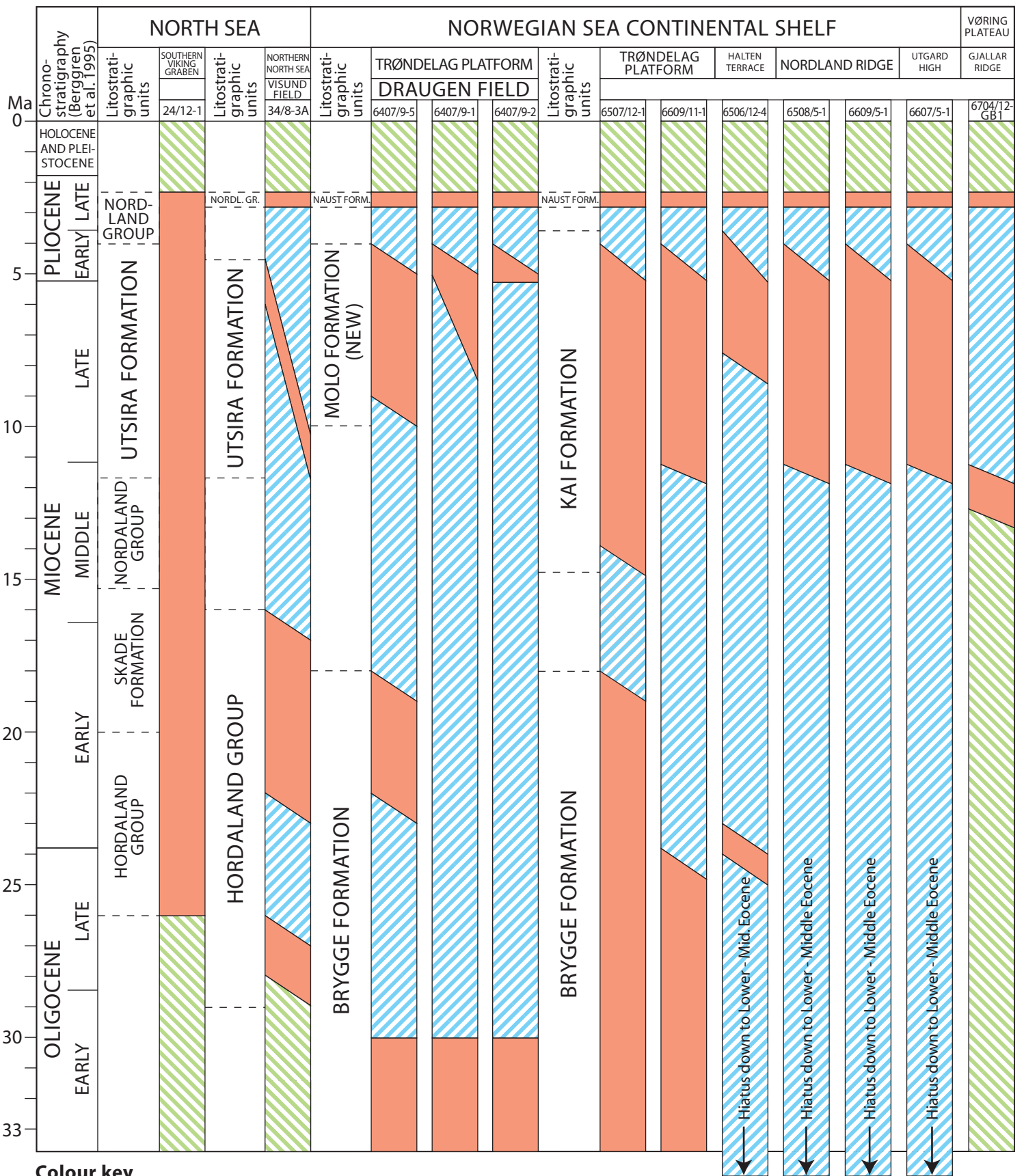


Fig. 2



Colour key

- Sediment present
- Hiatus
- Not sampled or analysed

OD 0408002

Fig. 3

6407/9-1

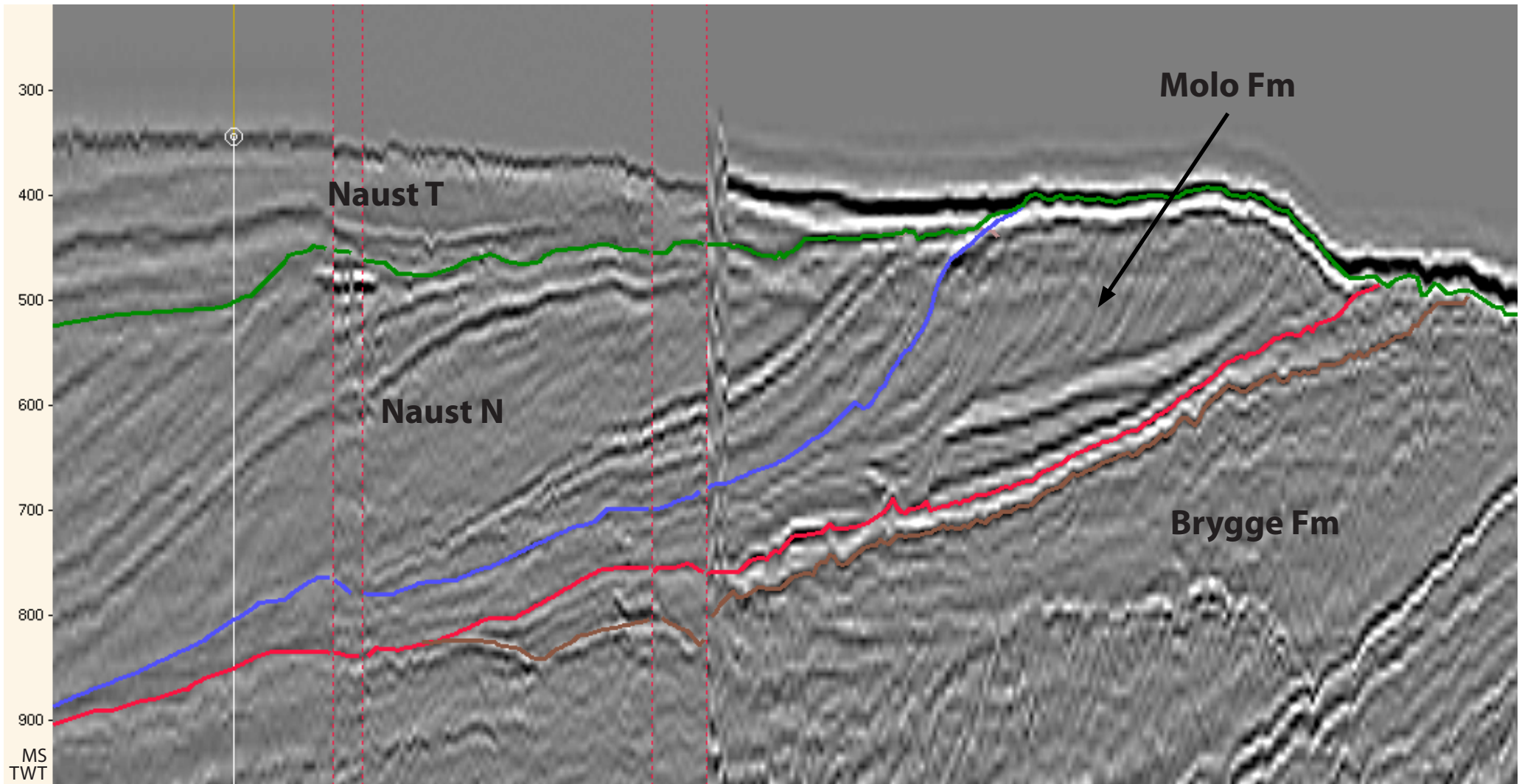


Fig.4a

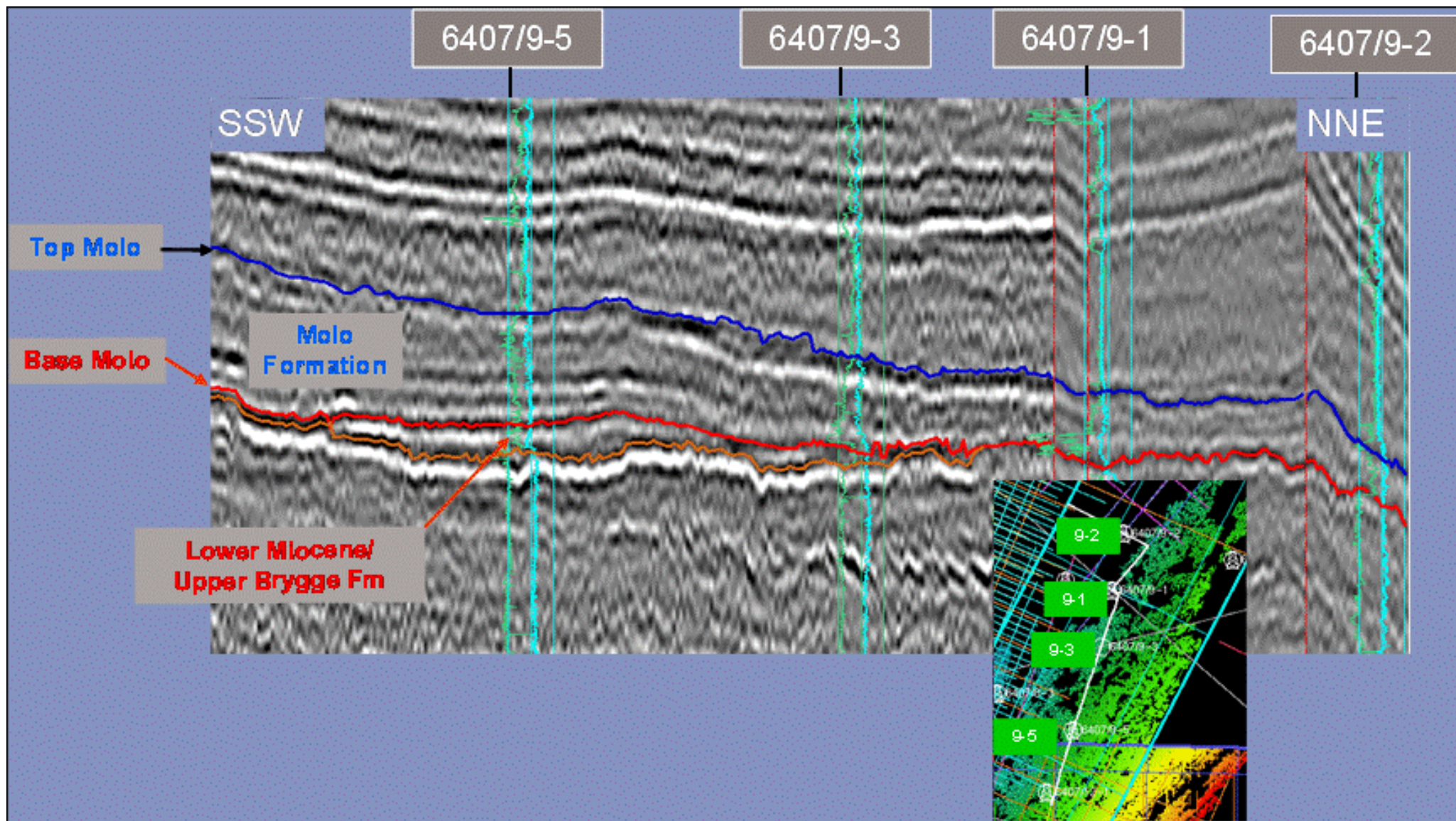


Fig.4b

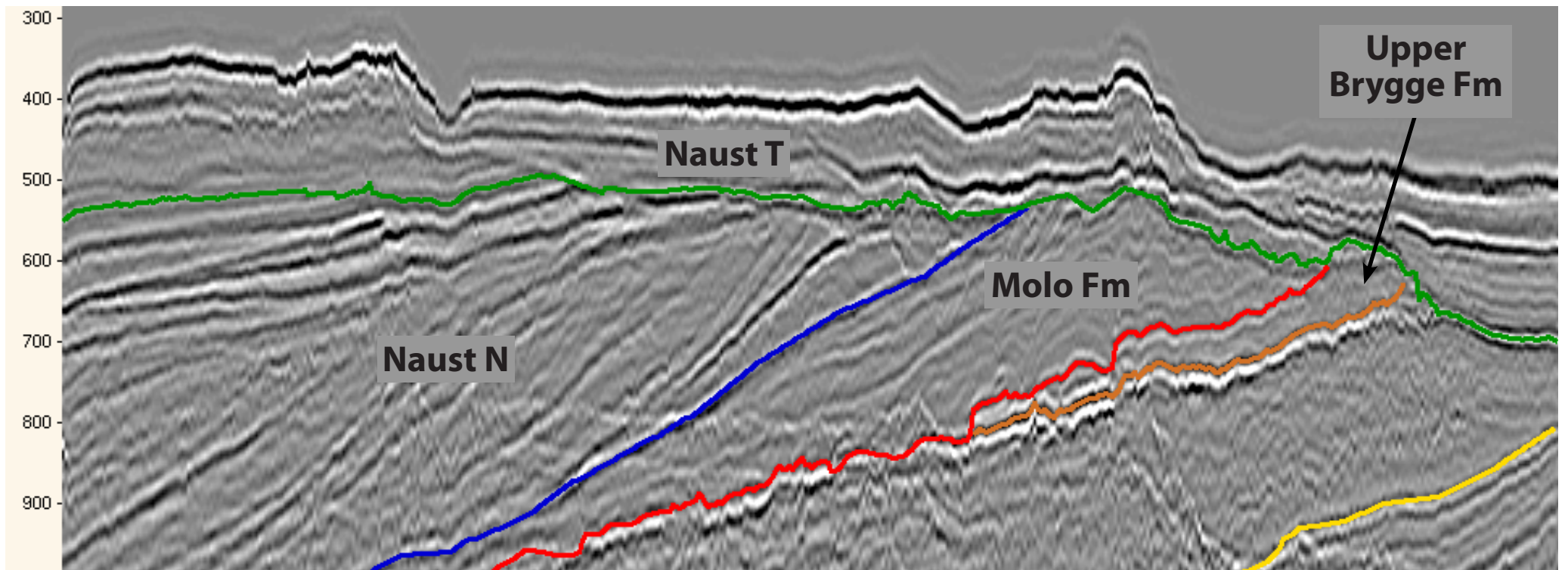


Fig. 5

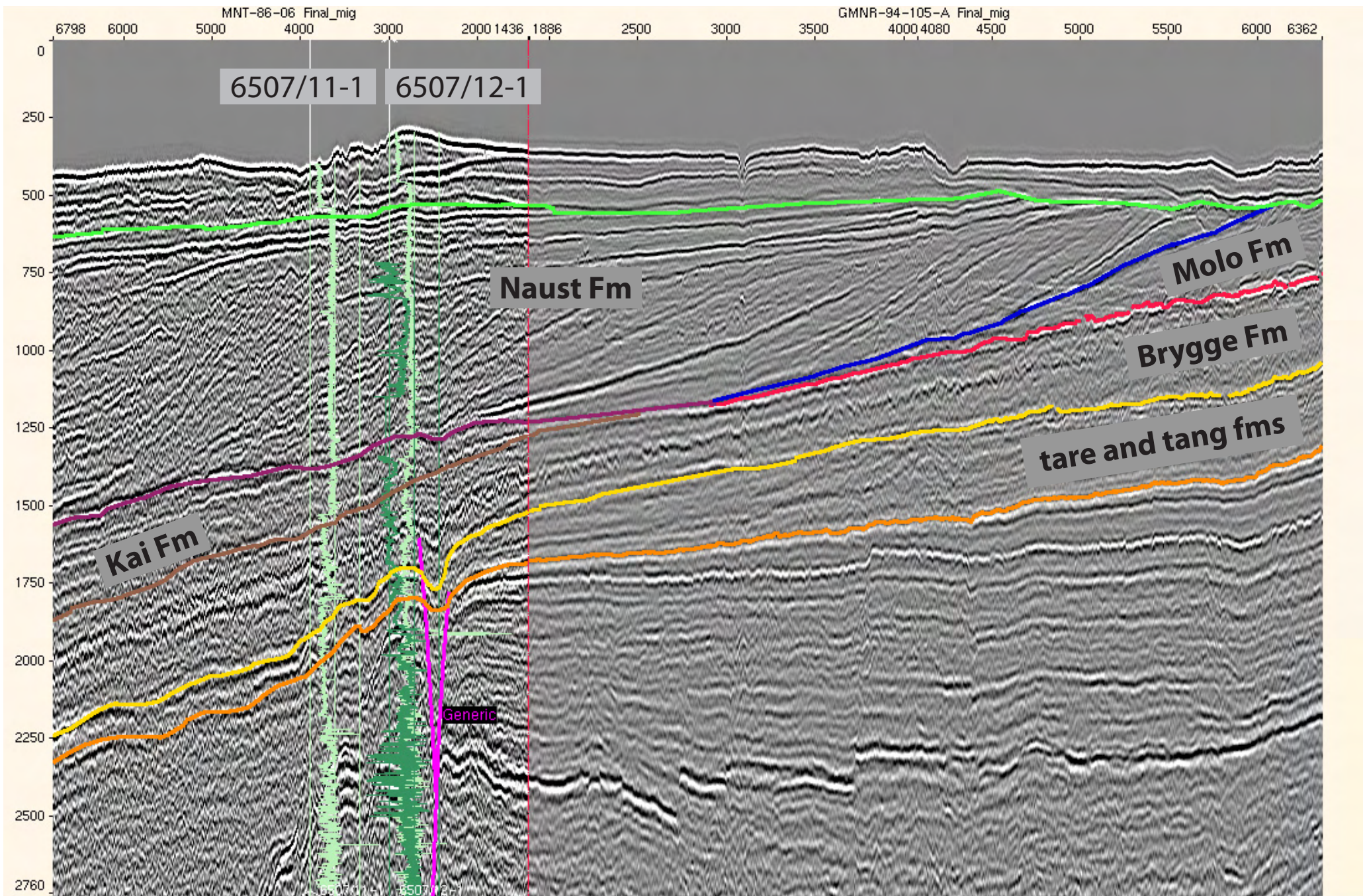
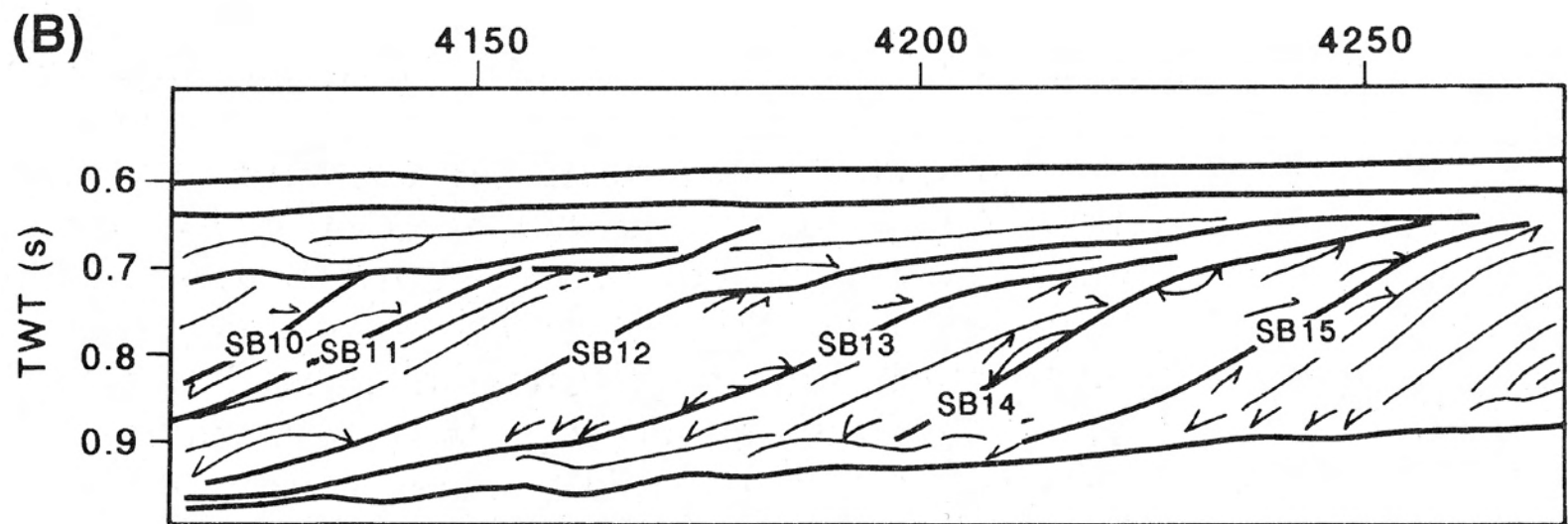
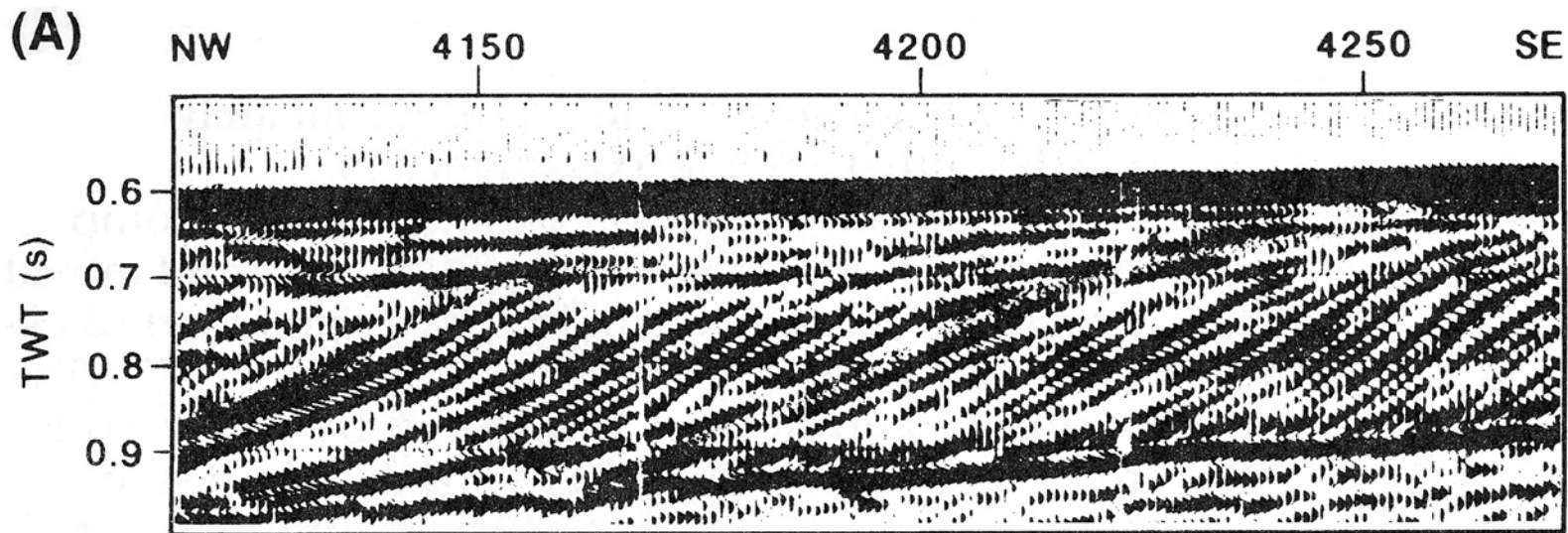


Fig. 6



- Onlap
- ⤵ Downlap
- ⤵ Erosional truncation
- ⤵ Erosional truncation

0 1 km

Fig. 7

Upper Miocene and Lower Pliocene sandy deposits

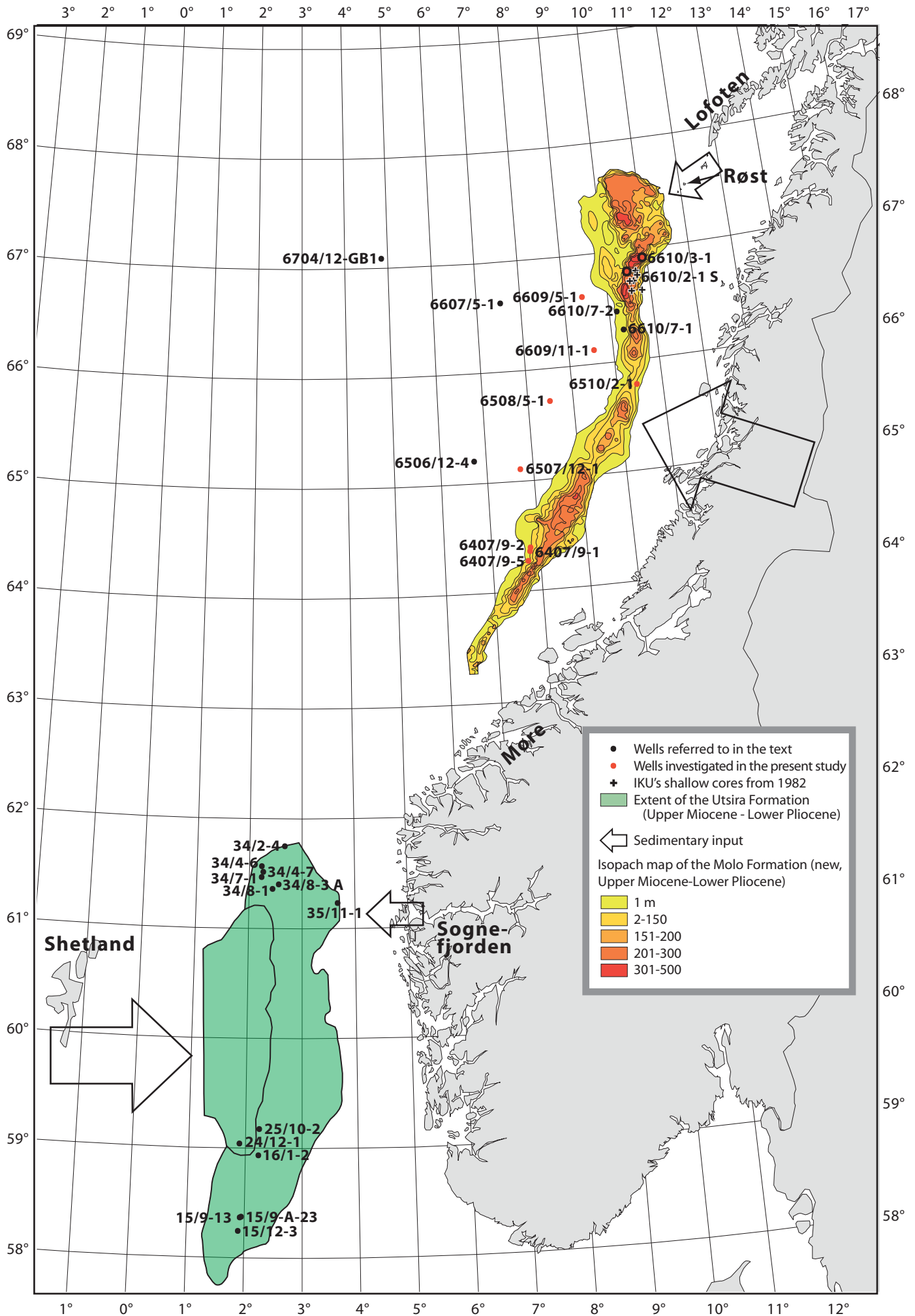


Fig. 8

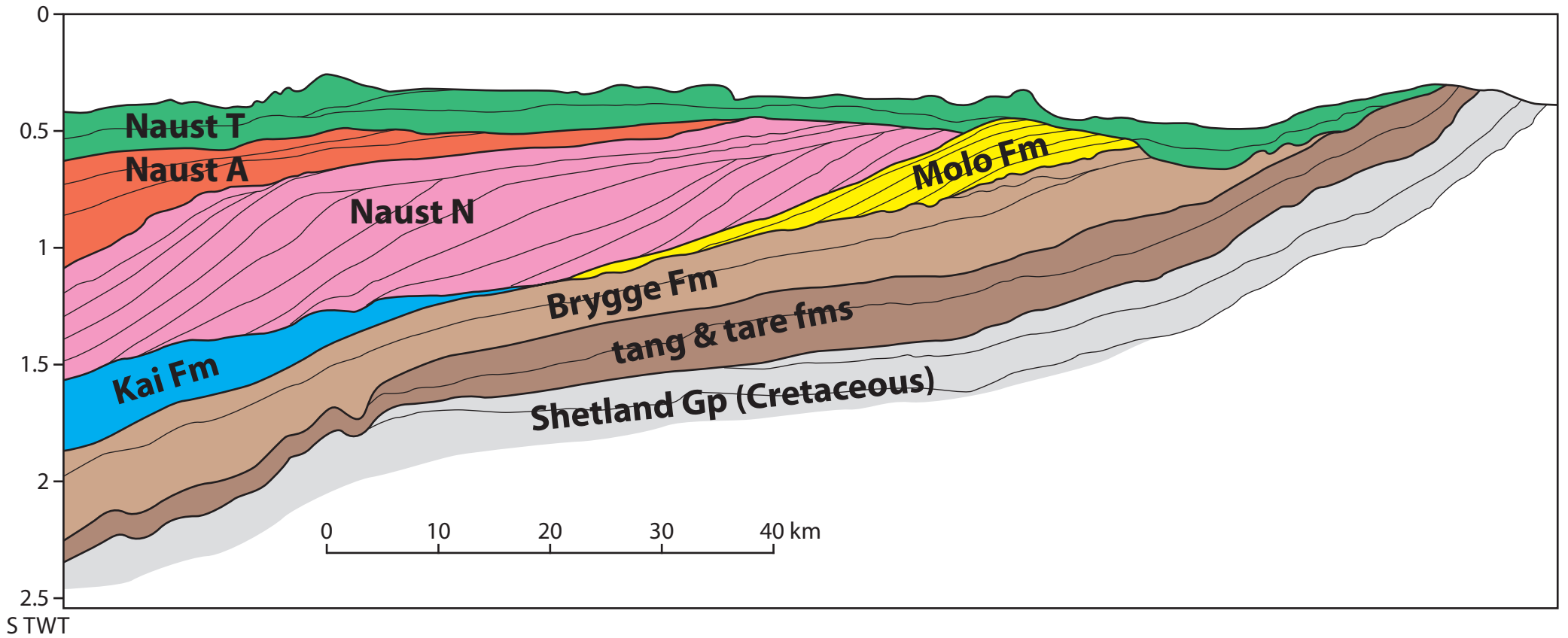


Fig. 9

Trøndelag Platform

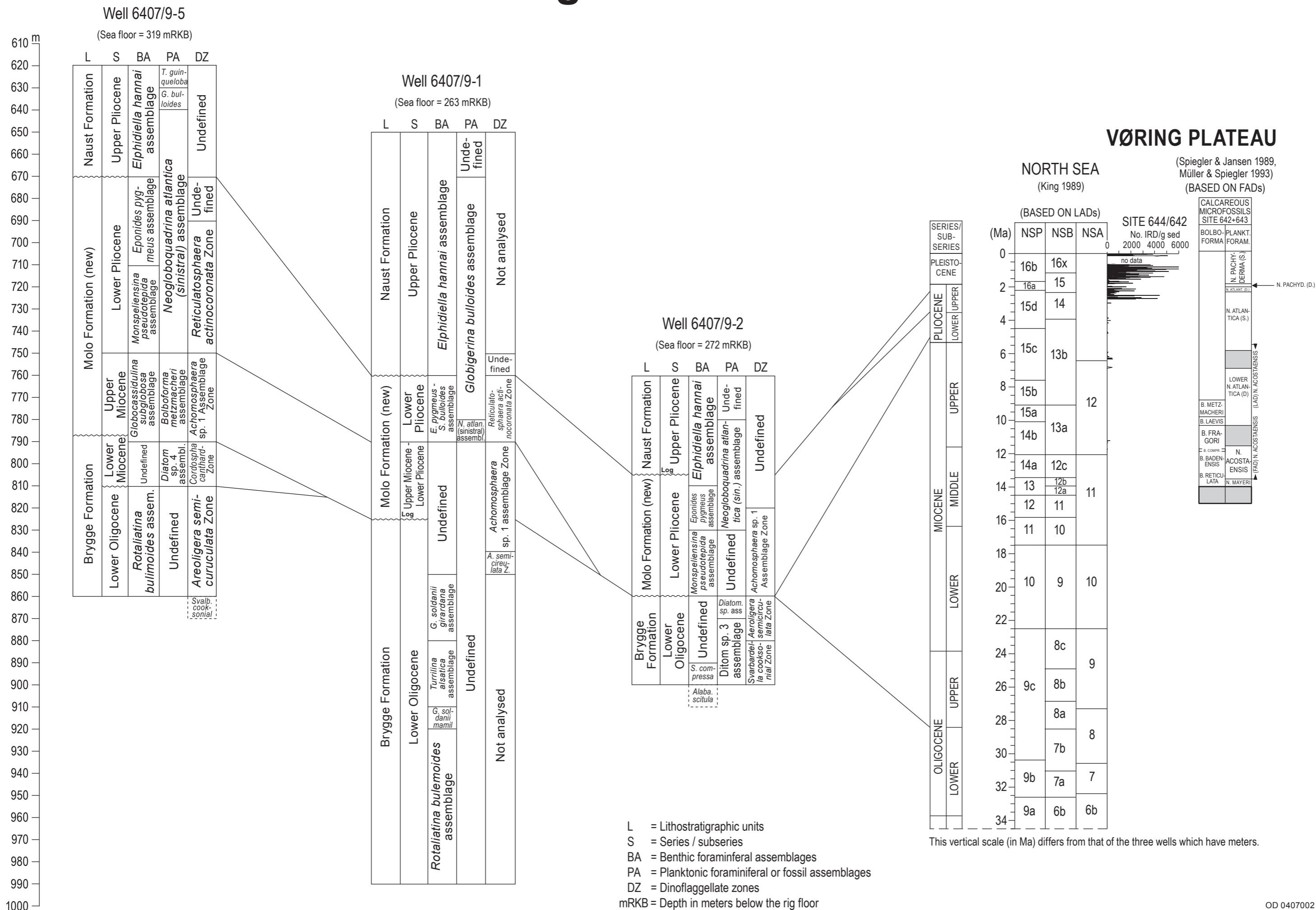


Fig. 10

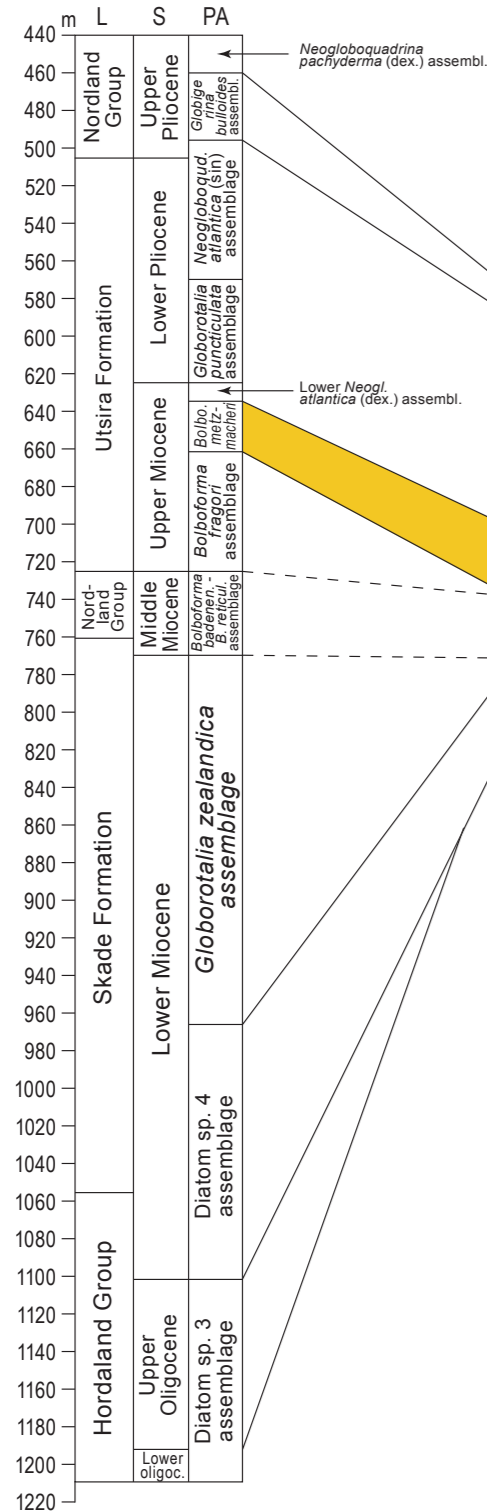
North Sea

Norwegian Sea continental shelf

Southern Viking Graben

Well 25/10-2

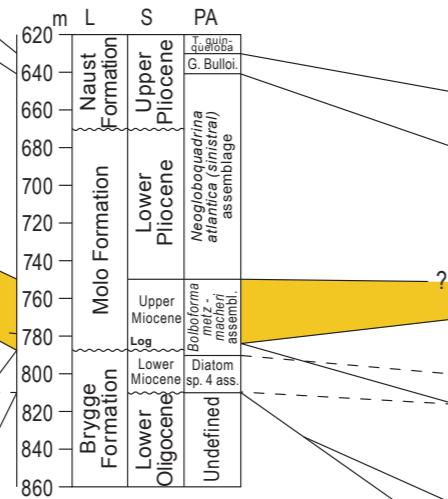
(Sea floor = 111,6 mRKB)



Trøndelag Platform

Well 6407/9-5

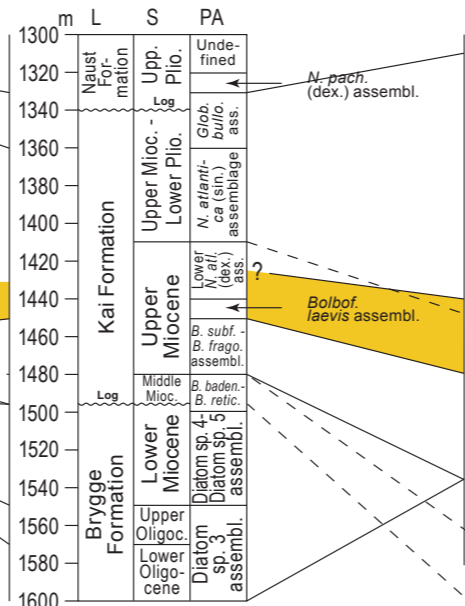
(Sea floor = 319 mRKB)



Halten Terrace

Well 6507/12-1

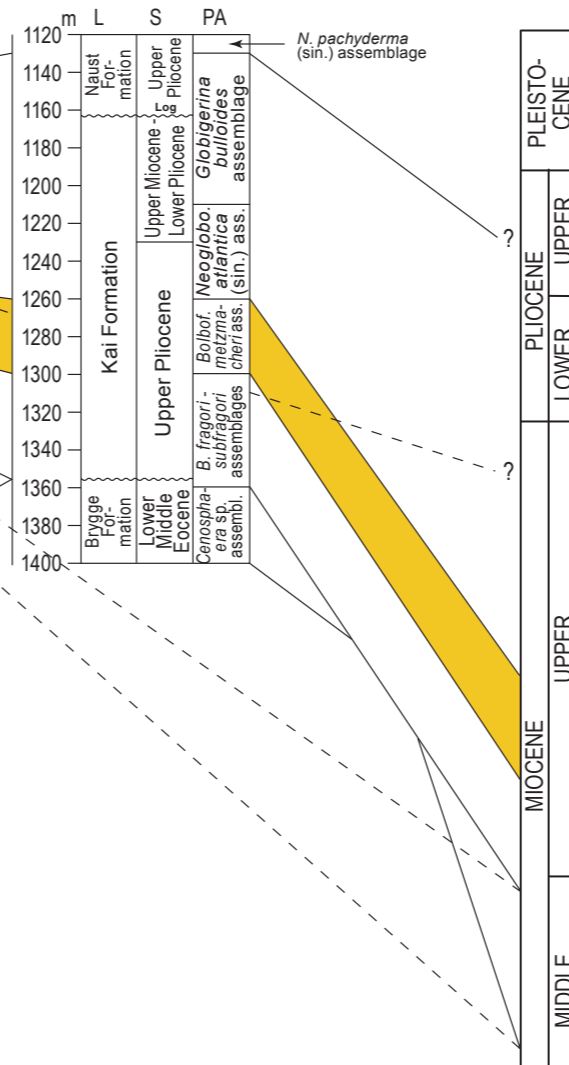
(Sea floor = 250 mRKB)



Nordland Ridge

Well 6508/5-1

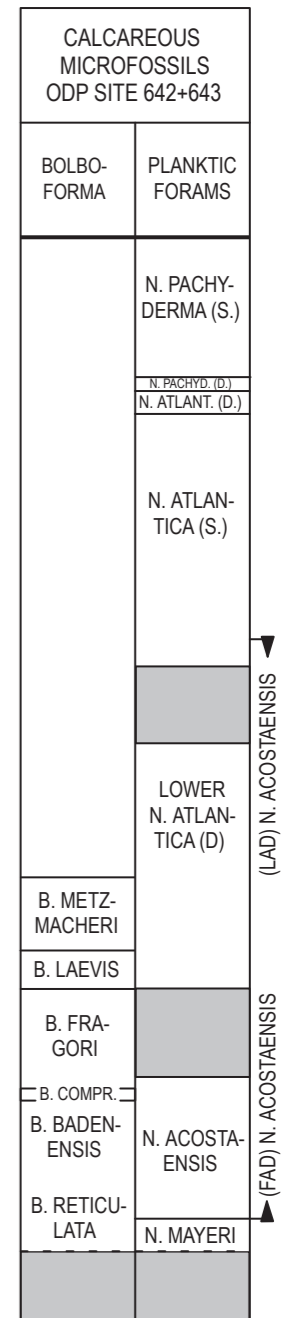
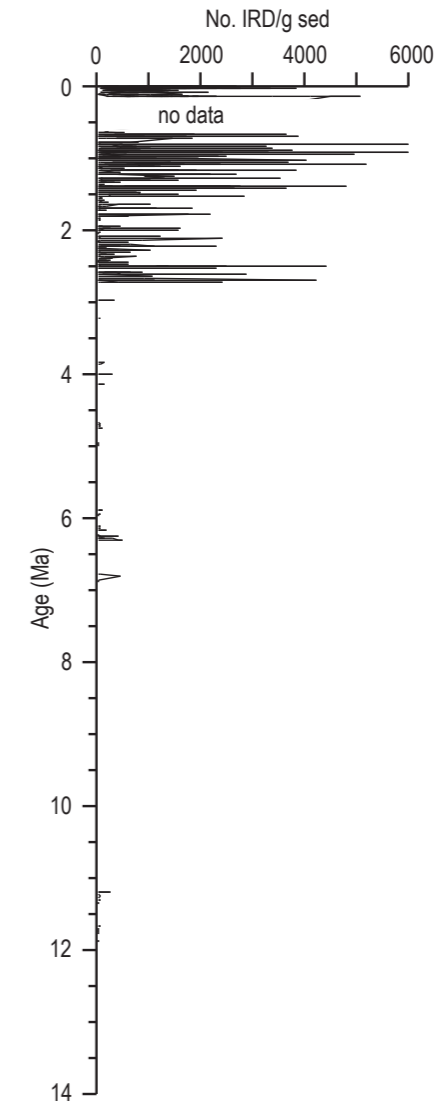
(Sea floor = 435 mRKB)



L = Lithostratigraphic units
 S = Series / subseries
 PA = Planktonic foraminiferal or fossil assemblages
 mRKB = Depth in meters below the rig floor

VØRING PLATEAU

ODP SITE 644/642



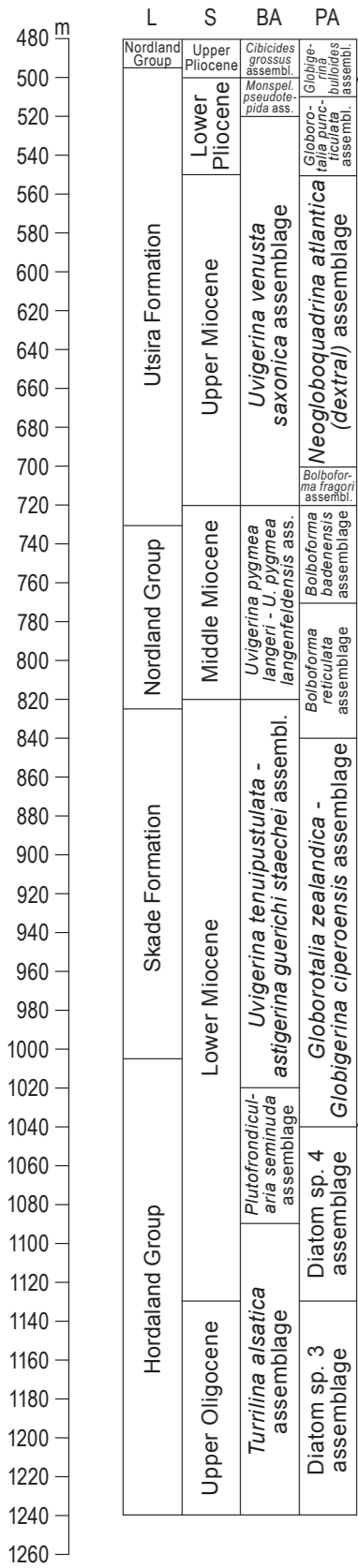
THIS VERTICAL SCALE (In Ma)
 DIFFERS FROM THAT OF THE
 FOUR WELLS (DEPT IN mRKB)

Fig. 11

North Sea
Southern Viking Graben

Well 24/12-1

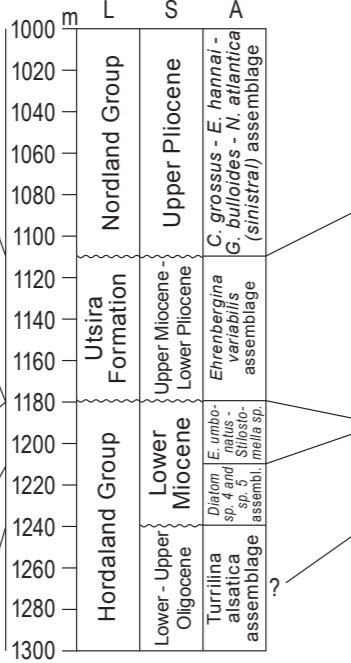
(Sea floor = 135 mRKB)



Norwegian Sea continental shelf
Trøndelag Platform

Well 34/8-3A

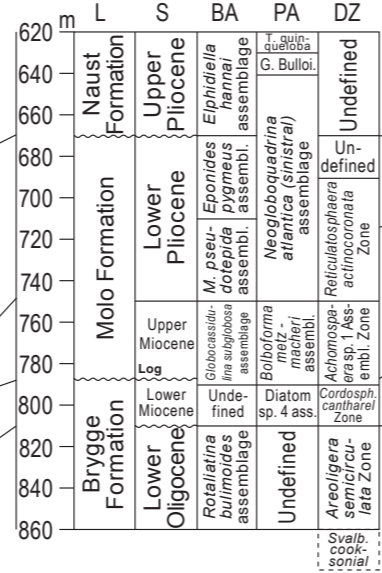
(Sea floor = 405 mRKB)



Norwegian Sea continental shelf
Trøndelag Platform

Well 6407/9-5

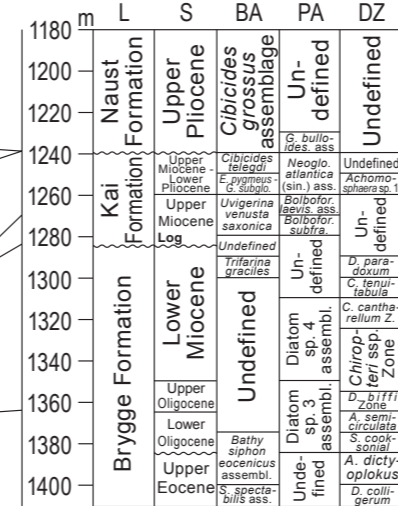
(Sea floor = 319 mRKB)



Norwegian Sea continental shelf
Nordland Ridge

Well 6609/11-1

(Sea floor = 263 mRKB)

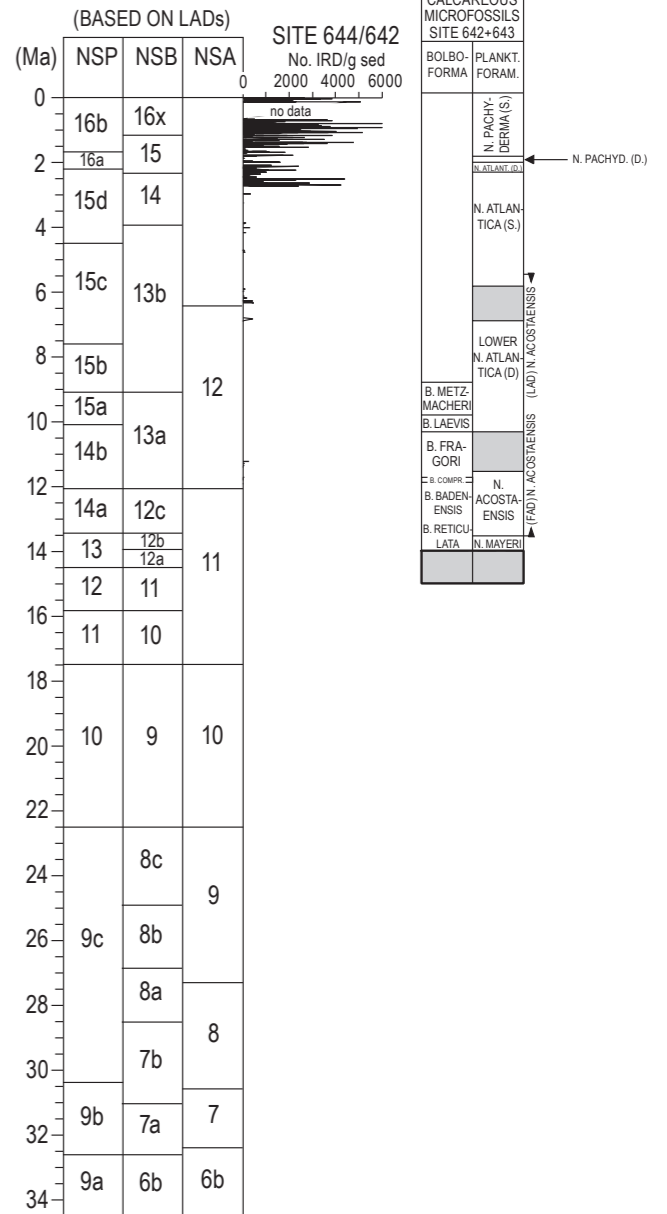


VØRING PLATEAU

NORTH SEA (King 1989)

(Spiegler & Jansen 1989, Müller & Spiegler 1993)

(BASED ON FADs)



This vertical scale (in Ma) differs from that of the four wells which have mRKB.

- L = Lithostratigraphic units
- S = Series / subseries
- A = Foraminiferal or fossil assemblages
- BA = Benthic foraminiferal assemblages
- PA = Planktonic foraminiferal or fossil assemblages
- DZ = Dinoflagellate zones
- mRKB = Depth in meters below the rig floor

Fig. 12