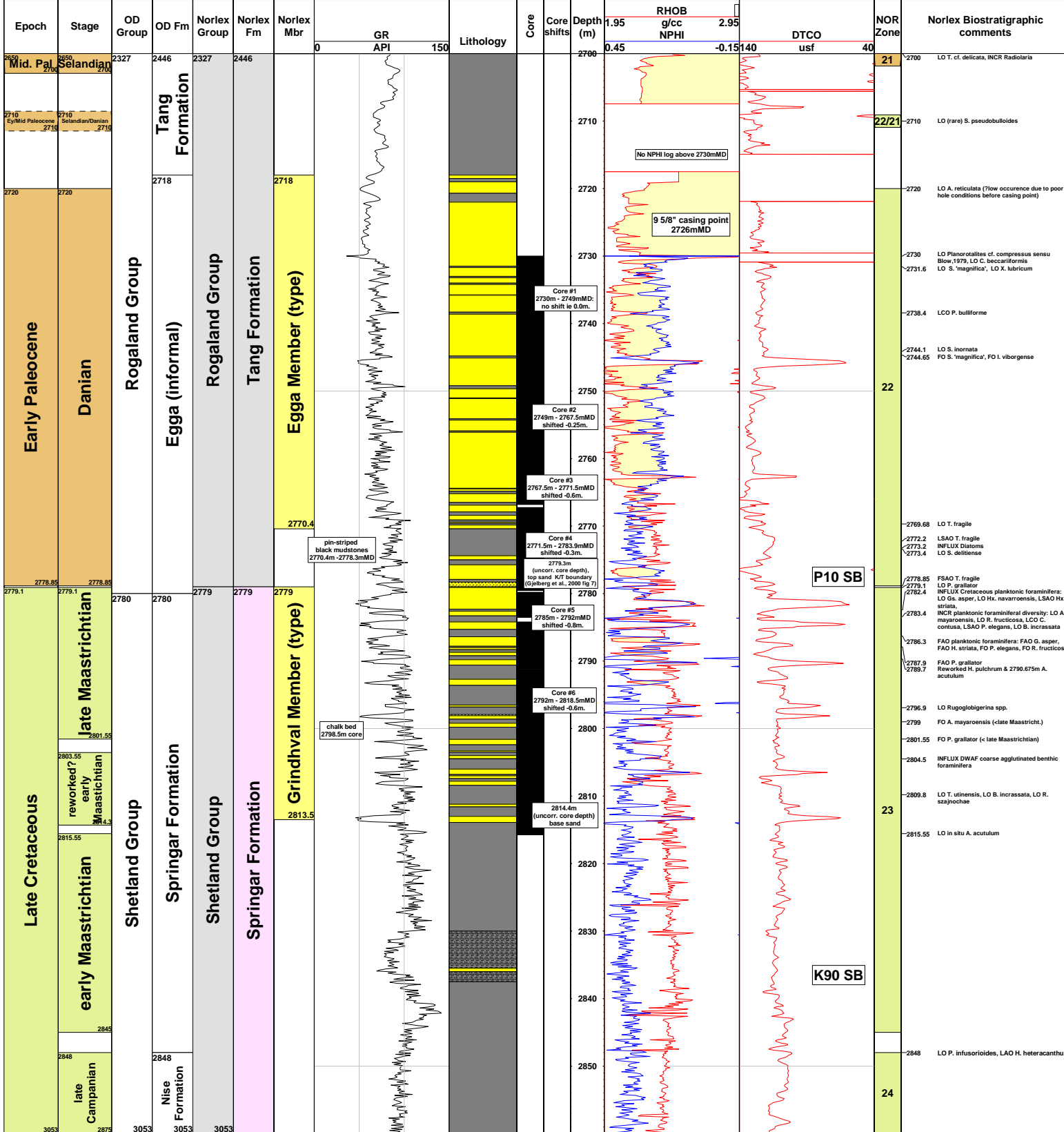


# 6305/5-1. Type section: Egga Member (new)

Operator : Norsk Hydro Production AS  
 Coordinates : 610533.1, 1049160  
 Range (MD) : 2708.00m - 2868.00m  
 Elevation : 11.00  
 TD : 3053.00m  
 Datum (KS) : 26.00m  
 LongLat : 5.34, 63.54  
 Water depth : 1068.00



P10 SB

K90 SB

pin-stripped black mudstones 2770.4m - 2778.3mMD

chalk bed 2798.5m core

Core #1 2730m - 2749mMD: no shift ie 0.0m.

Core #2 2748m - 2767.5mMD shifted -0.25m.

Core #3 2767.5m - 2771.5mMD shifted -0.6m.

Core #4 2771.5m - 2783.9mMD shifted -0.3m.

Core #5 2785m - 2792mMD shifted -0.6m.

Core #6 2792m - 2818.5mMD shifted -0.6m.

2814.4m (uncorr. core depth) base sand

2793.3m (uncorr. core depth, top sand KIT boundary (Gjelberg et al., 2006 fig 7))

9 5/8" casing point 2726mMD

No NPFI log above 2730mMD